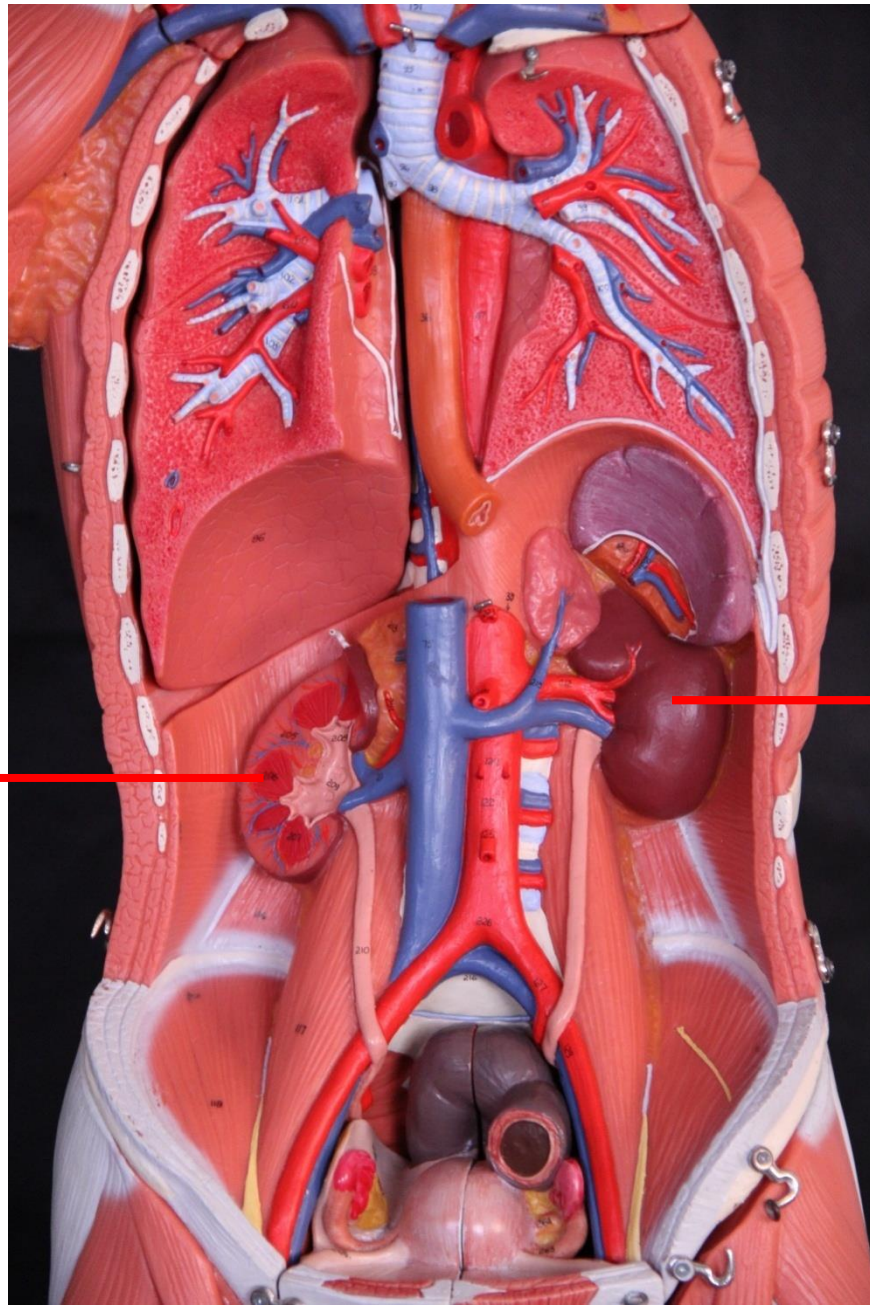




# *SISTEMA URINÁRIO*

# *Funções*

- Filtrar o sangue, eliminando substâncias desnecessárias, em excesso ou prejudiciais para o organismo;
- Regulação do equilíbrio hídrico do corpo, do equilíbrio ácido-básico e da composição eletrolítica do sangue;
- Produção de urina.



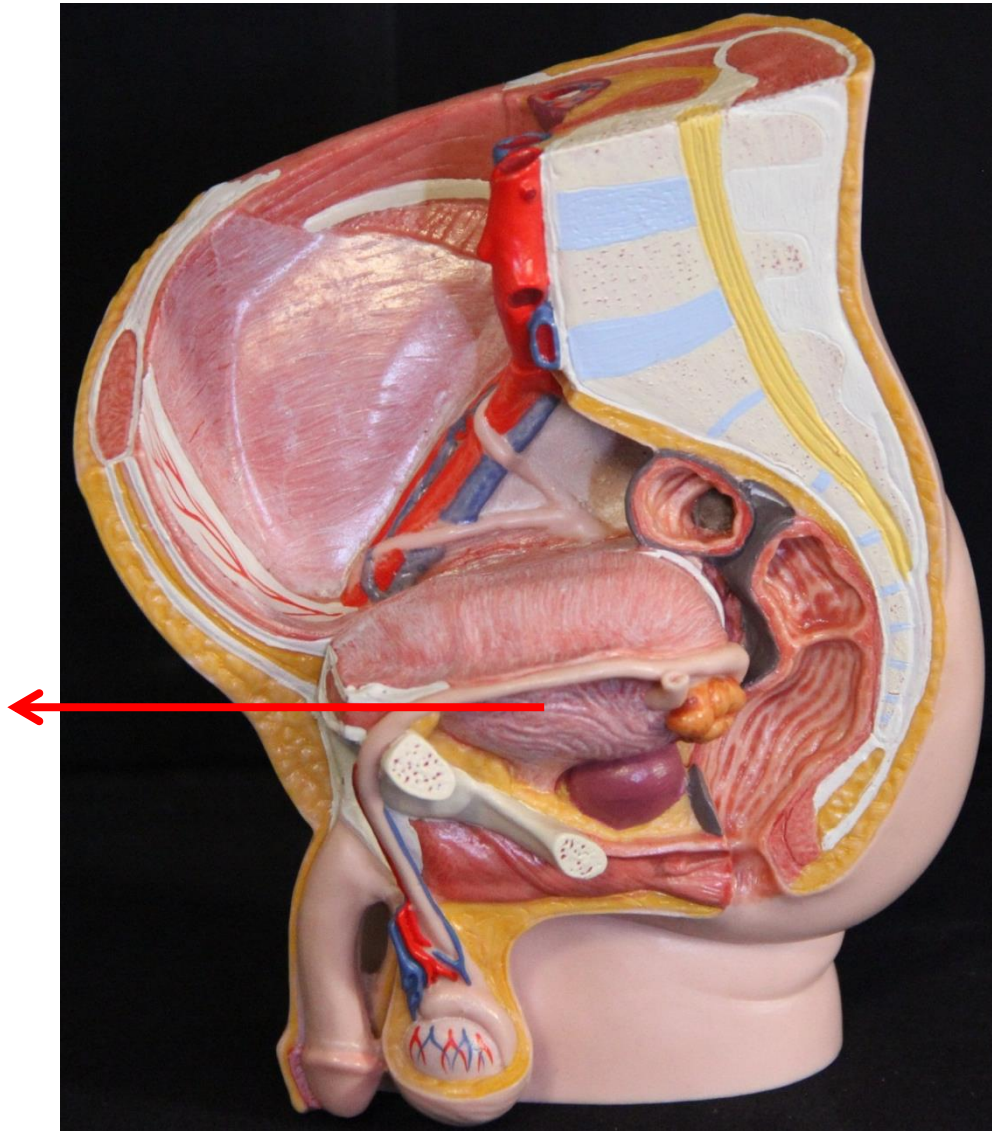
Rim direito

Rim esquerdo

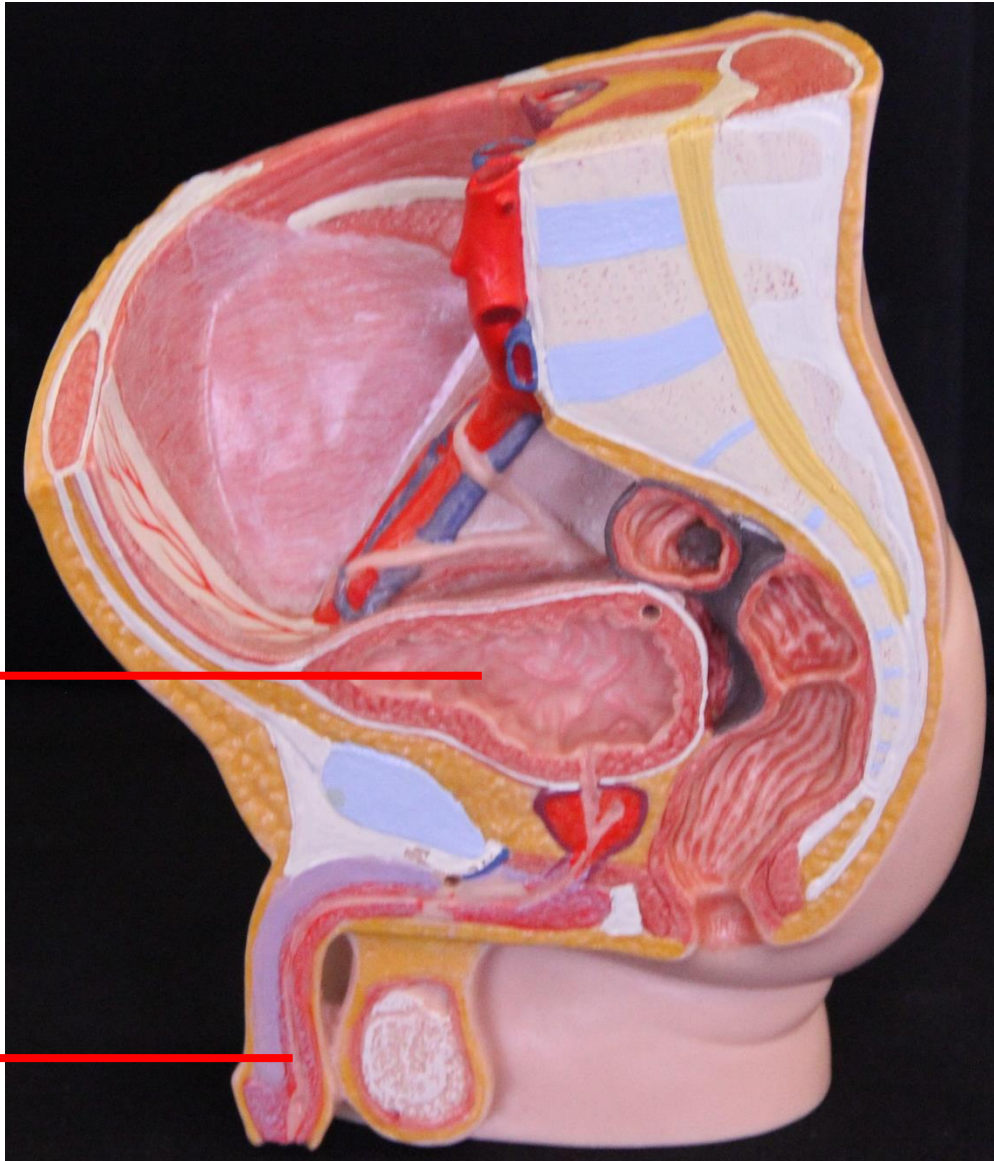
Vista anterior

**MASCULINO**

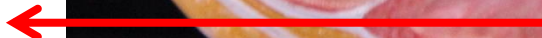
Bexiga  
Urinária



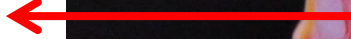
Vista lateral



Bexiga  
Urinária



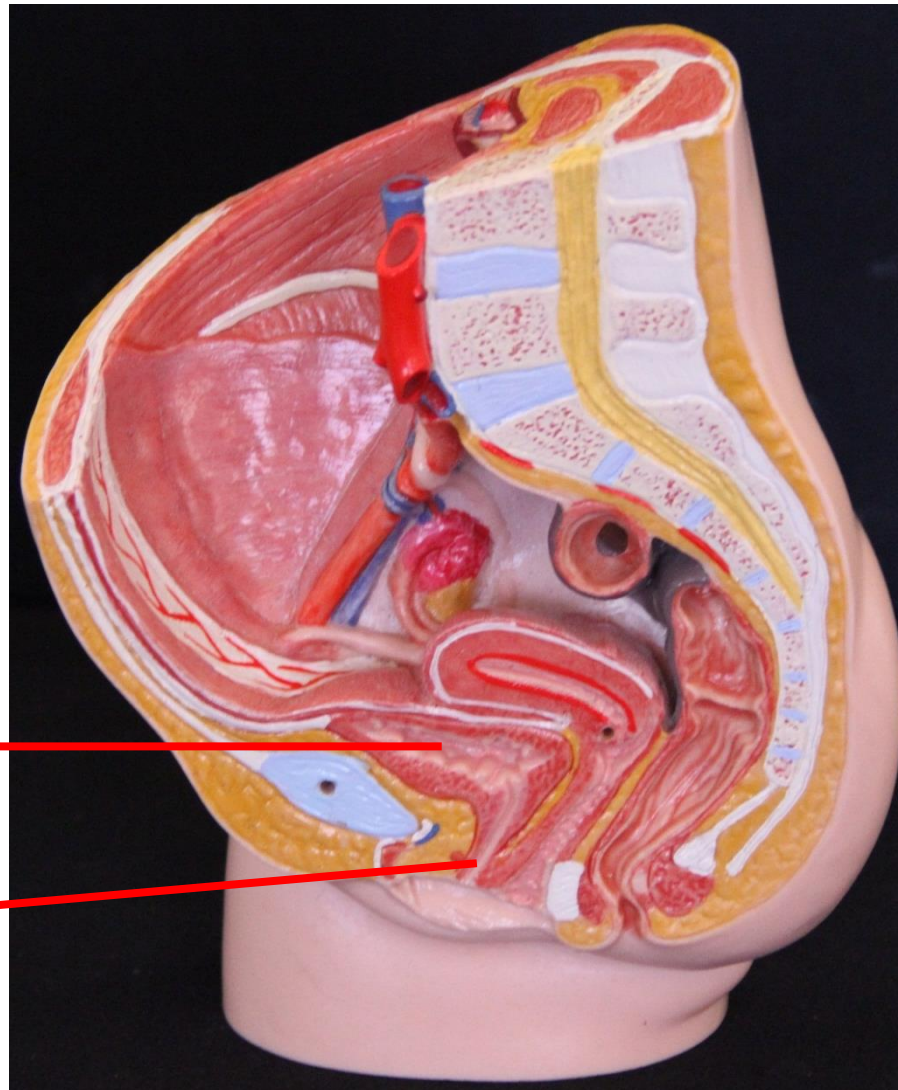
Ureta



# FEMININO

Bexiga  
Urinária

Uretra

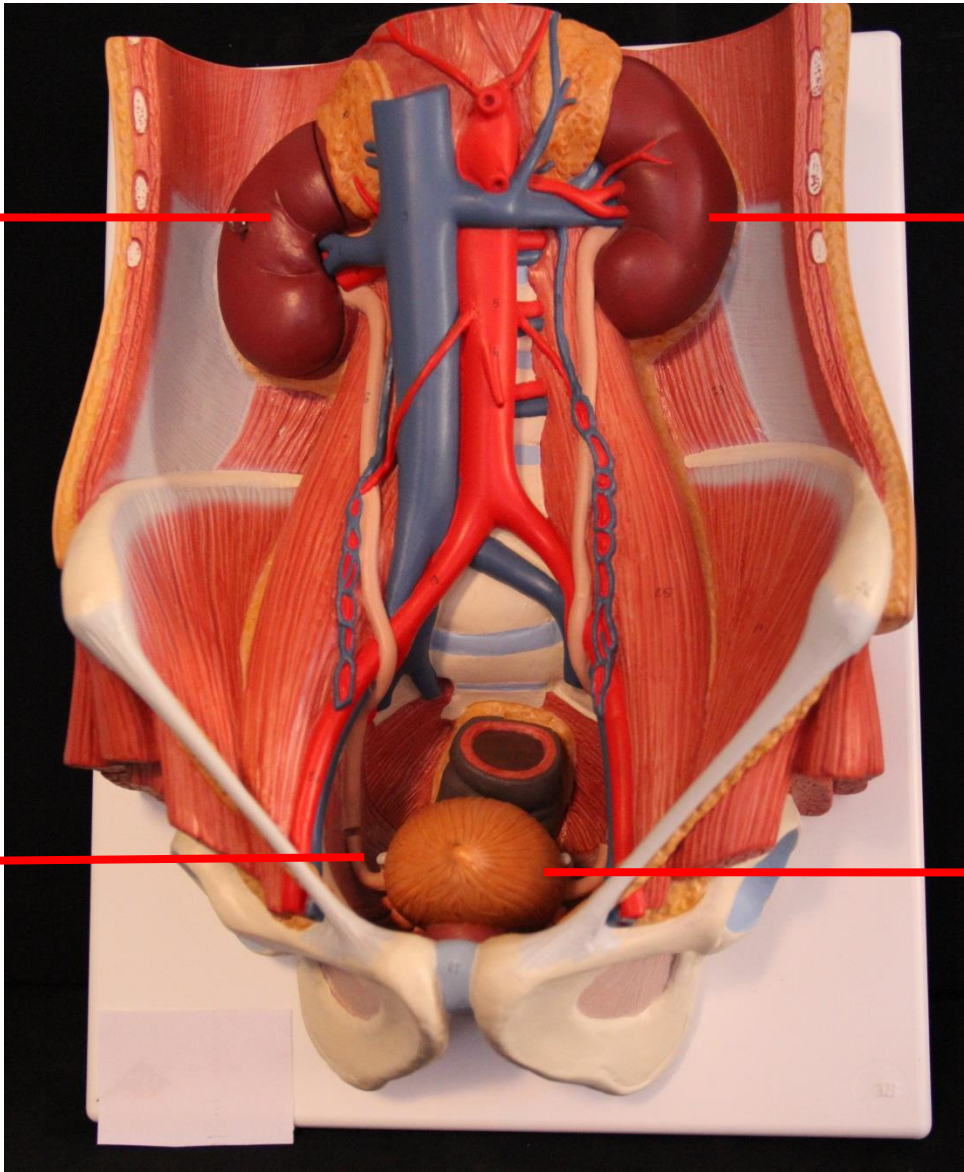


Rim direito

Rim esquerdo

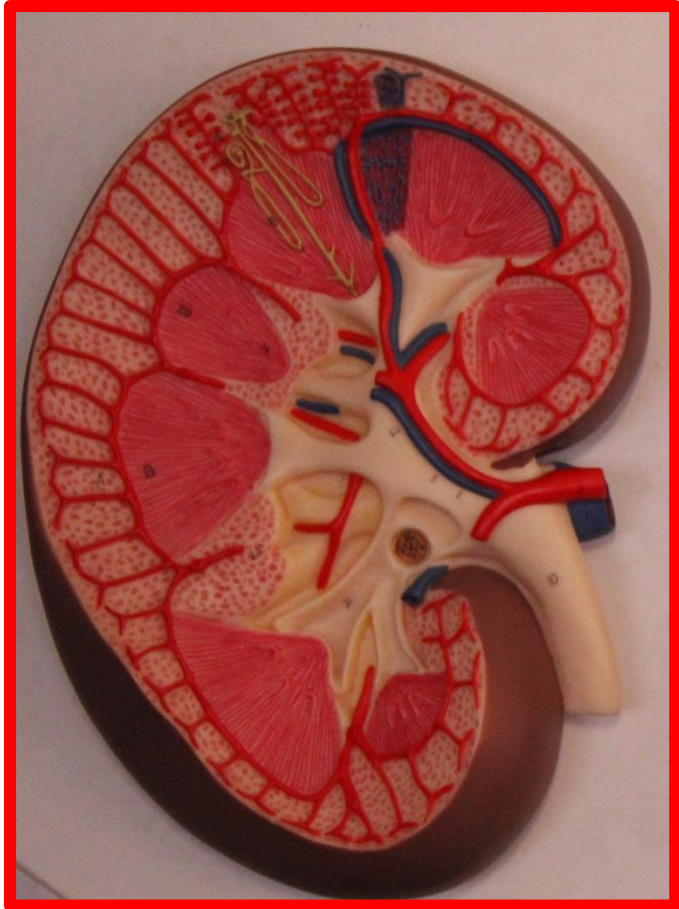
Ureter

Bexiga  
Urinária

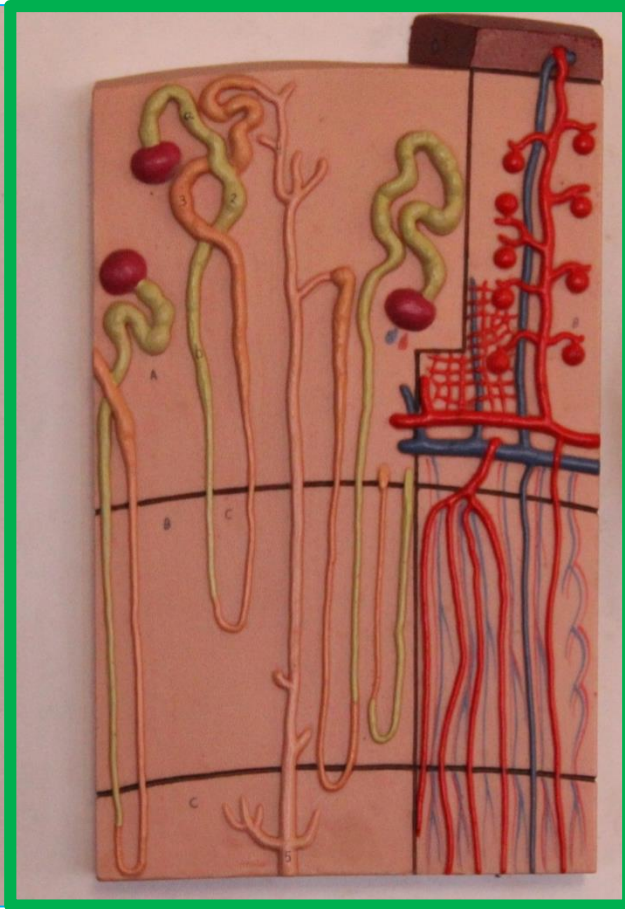


Vista anterior

Rim



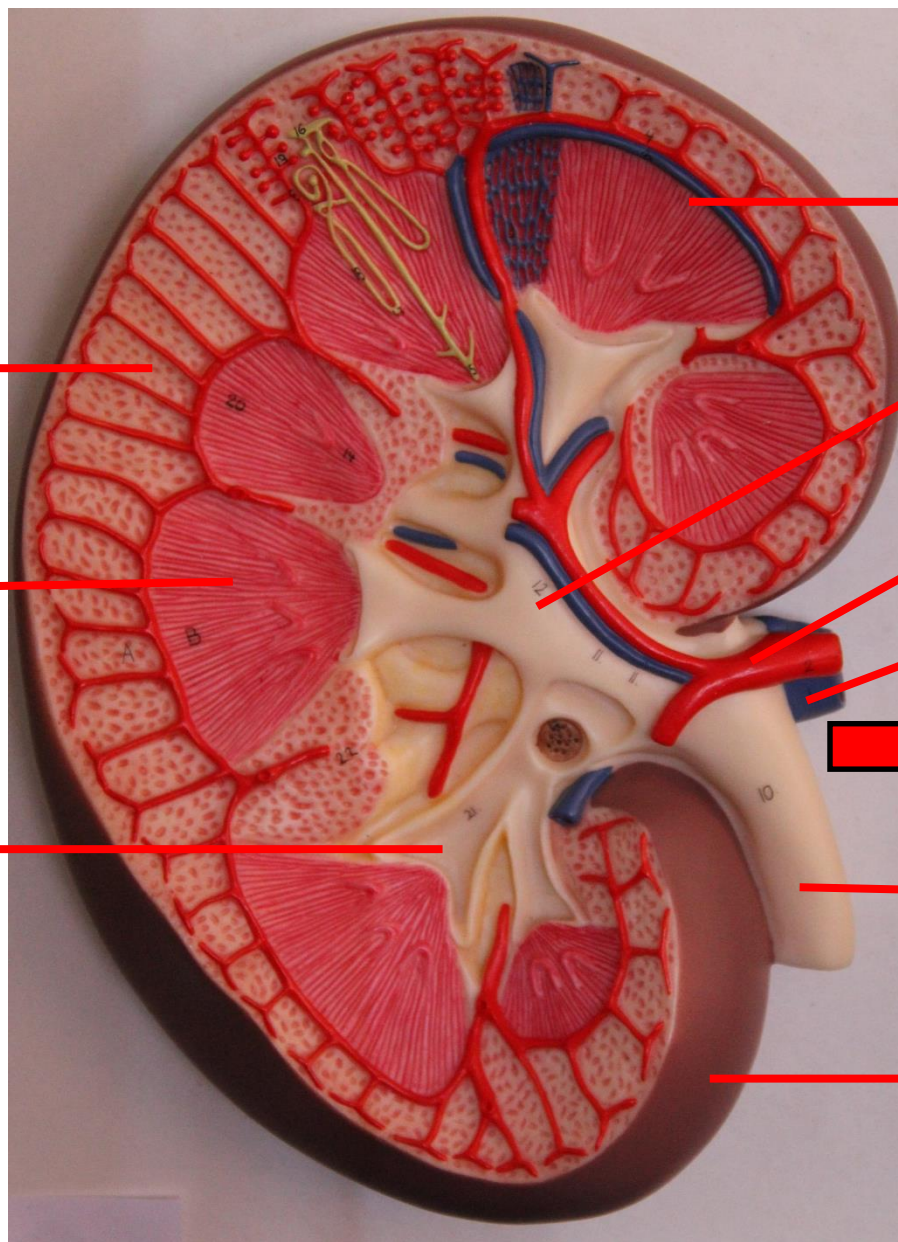
Néfrons  
Túbulos Renais



Corpúsculo Renal







Córtex Renal

Pirâmide Renal

Cálice Renal

Medula Renal

Coluna Renal

Artéria Renal

Veia Renal

Hilo Renal

Ureter

Cápsula Renal

Túbulo contorcido proximal

Túbulo contorcido distal

Corpúsculo renal

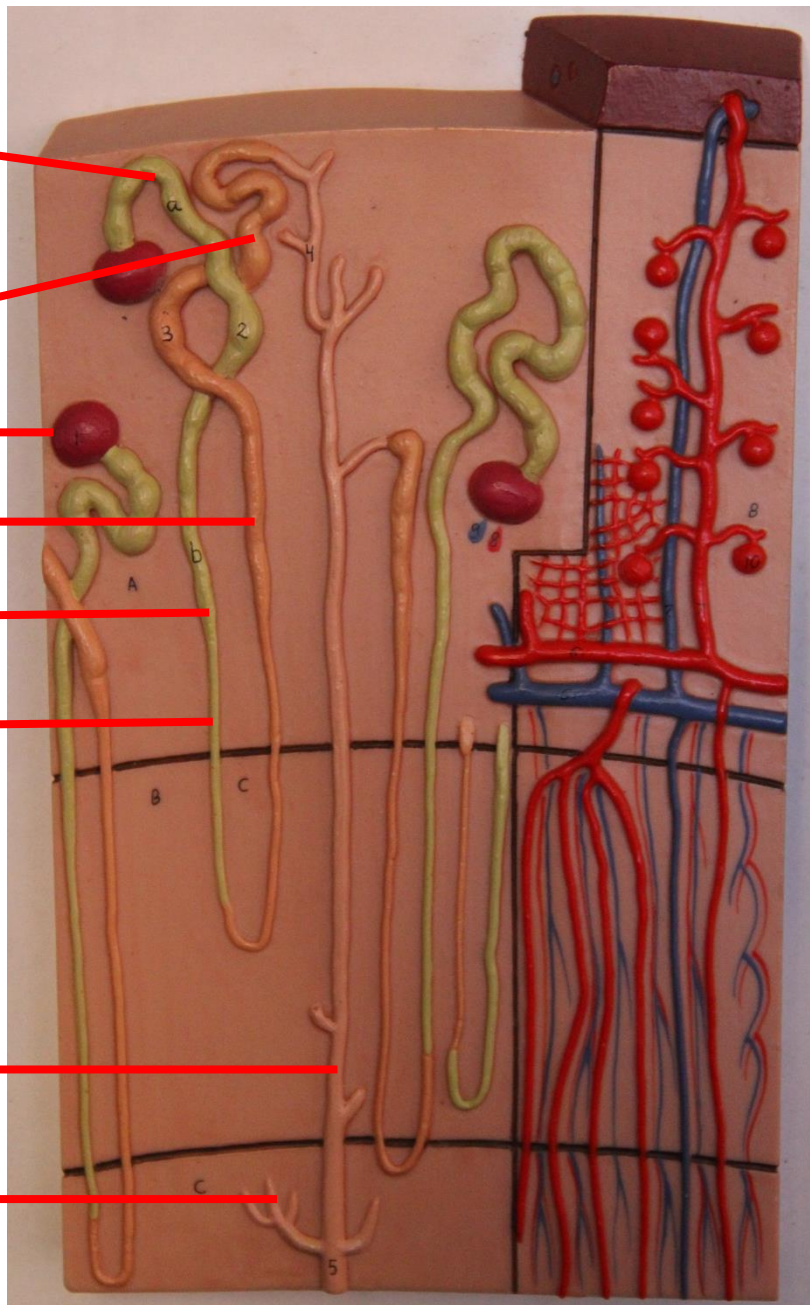
Porção ascendente

Alça de Henle

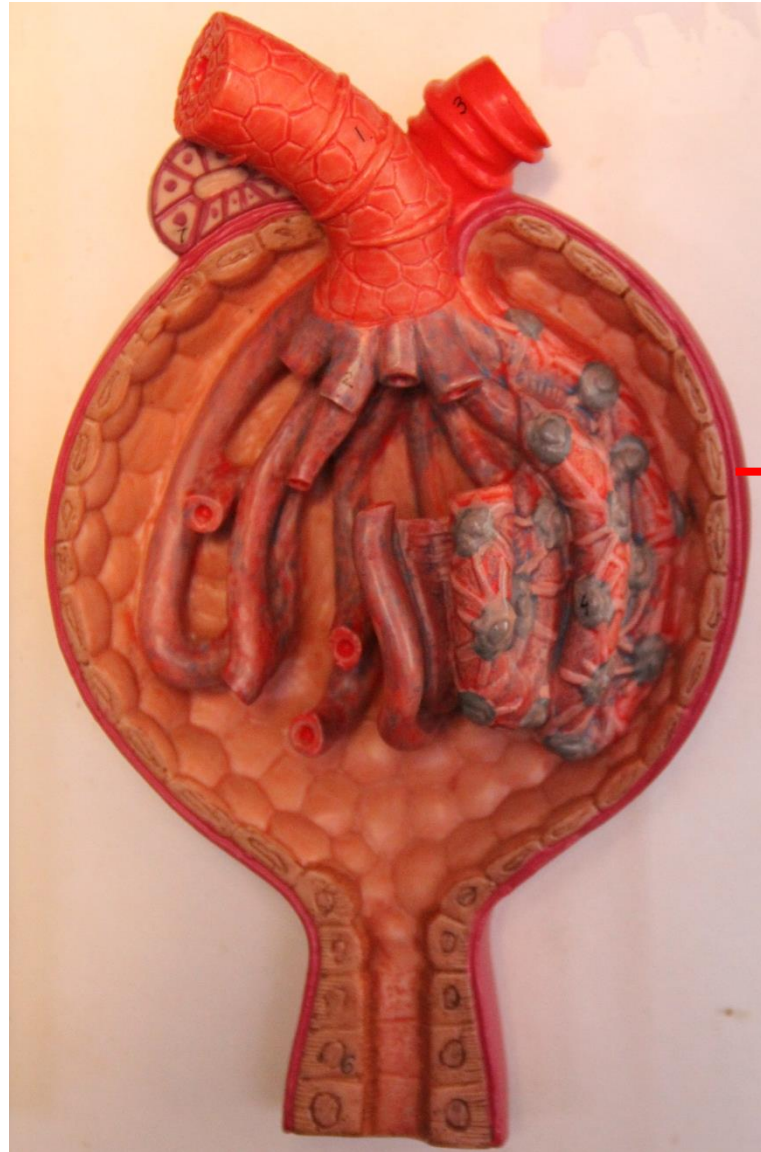
Porção descendente

Túbulo Coletor

Ducto Coletor



# Corpúsculo Renal



Cápsula  
Glomerular